

In tune with Time...  
In tune with Technology...  
In tune with Industry...



**EXCELMARK BUSINESS PAPERS  
PRIVATE LIMITED**



EXCELMARK BUSINESS PAPERS PVT. LTD. : One of the pioneers in the supply of Specialty Papers like Thermal / Inkjet / Sublimation papers. EXCELMARK has been, since its inception in 1985, making a consistent progress in its core business activity through the implementation of innovation, technology and industrial trend. Due to this, EXCELMARK has made a remarkable presence in the market winning the hearts of its clients, through its adaptation to changing trend, delivering quality products and meeting the market's timely requirements.



**Milestones:**

**Started in 1985:** Indigenous carbonless paper, thermal paper & stationery items supplier.

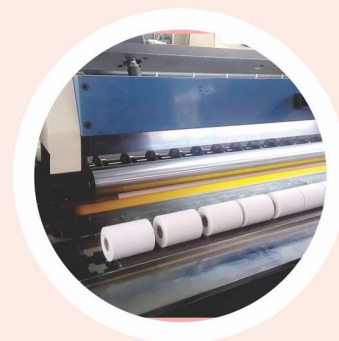
**Year 1995:** Imported Thermal & Carbonless papers from Europe and USA.

**2015 to till date:** Launched own brands of Imported Thermal, Inkjet & Sublimation papers.

Full fledged conversion plant including Printing, packaging, handling equipments, slitting and rewinding. Today, we stand tall with 10,000 sq. ft. infrastructure including imported machineries, equipments and professional team to enhance the quality and meet the market standards.



Today EXCELMARK is a name to be reckoned with quality, in Thermal Papers, Sublimation papers and Inkjet Papers. EXCELMARK has its own brand **ADEMS** Thermal Papers and **XL-PLUS** Inkjet & Sublimation papers, both of them creating demand in the market due to great quality and affordable price.





**Thermal Papers:**

As the pioneers in the thermal papers, **ADEMS** Thermal papers are made of superior quality to deliver silky smooth finish and glossy appearance. **ADEMS** Thermal papers confirm the safety standard of The European Thermal Paper Association (ETPA).

**EXCELMARK** started importing these thermal papers right from the time when these were becoming popular during 1990s. We import papers from Global Majors like Mitsubishi, Koehler, Kimoha, Thermax, Oji etc., for the manufacturing of these rolls. **ADEMS** Thermal Papers play a pivotal role in providing thermal papers to customers for various applications. We also provide Color Tinted Thermal Paper rolls from **48 gsm** to **80 gsm** for a range of requirements.

**Application areas:**

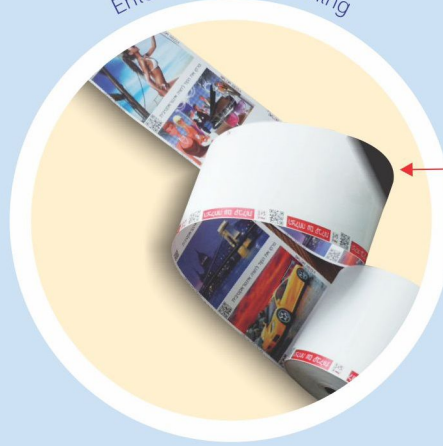
Thermal Papers have innumerable range of applications. Today almost any business / organization use thermal paper in many of their transactions. Banks, Hospitals, Retail shops, Travels, Ticketing... name anything; thermal paper shows its presence constantly.

Anything in the market that needs a slip as a token of transaction, **ADEMS** Thermal papers shows its hallmark presence.

Medical sheets



Entertainment & Gaming



Uniform Blackening

**Top Coat Thermal Papers**

These are the special Top Coated fine thermal papers to retain image durability for very long years.

Top Coat thermal paper finds its importance in:

- Medical
- Gaming
- Toll Plaza
- Ballot Paper for EVMs
- Theaters (entertainment)
- Lottery
- Transport ( Bus, Train, Air tickets)
- Financial statement etc.

Available from **70 gsm** to **130 gsm**, these thermal papers also provide advertisement space for brands to showcase their product(s) in a colorful way!

Travel Tickets



Travel Tickets



Super market bills



Even coating, smooth, with the lowest fray of printing head



**Sizes to suite your printer & needs:**

There are certain standard sizes readily available with us to suite the market requirement.

Standard sizes in POS / Cash Register rolls:

**80 mm / 57 mm / 110 mm** width  
Apart from these sizes we are also specialized in making customize sizes. We provide standard export pkg. for all our products.

CAD / Plotter rolls for engineering drawing and graphic needs are also available with us.

We also provide pre-printed thermal rolls for all purposes and customized sizes.



Prime quality thermal paper, dark image, clear definition, good brightness and long keeping time.



**Product advantage:**

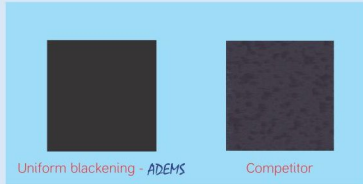
Owing to the thermal printers demand **ADEMS** thermal papers adhere to strict quality standards to deliver the desired result. Especially the Top Coat thermal papers are additionally coated to prevent the influence of environmental factors.



Some of the special features of **ADEMS** Thermal Papers are:

- ▶ Uniform blackening
- ▶ Smooth surface
- ▶ No fouling of print head
- ▶ Excellent ink receptivity
- ▶ No abrasion
- ▶ Non-hazardous to humans
- ▶ Eco-friendly

Unlike normal thermal papers, **ADEMS** Thermal Papers are no risk, whatsoever to environment, in terms of use, storage or disposal.



**Non-fadeable thermal paper rolls :**  
Our Non-fadeable grade thermal paper rolls differ from other normal POS Thermal papers in terms of non-fadeability for longer period of time. The medical bills, Bank statements etc., printed on Non-fadeable thermal papers guarantee the required storage time even under some extreme climatic conditions.

If complied with the storage conditions, you can rely on its guaranteed durability!

Account statements are important records to be saved for many years



**ADEMS**

Printing doesn't fade for the prescribed period



**Competitors**

Printing gets faded within limited period

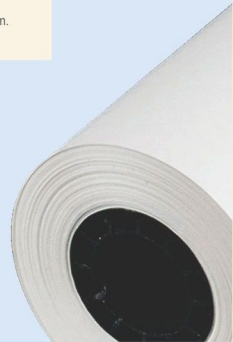
*Safety & Eco-friendly*



The European Thermal Paper Association (ETPA) confirms the safety of direct thermal papers  
The Federal Institute for Risk Assessment (BfR) stated has recently reaffirmed that there is no risk to human health through handling these products.  
The European Food and Safety Association (EFSA), also reached the same conclusion.  
The British Environmental Agency states in the Risk Assessment it issued in February 2010 that there is no risk to human health through handling direct thermal papers. The report also confirms that there is no risk to the environment, e.g. through the recycling of direct thermal papers.

**ADEMS**<sup>TM</sup> Deals with ETPA confirmed safety Direct Thermal Papers only.

Characteristics	
Sensitivity:	Standard / High sensitivity
Printing Speed:	max. 8" / 12" & 200 mm per second
Protection Coating:	Non-Topcoat / Topcoat
Stability:	Normal / High stability against environmental influence such as heat, humidity, light, lanolin, ethanol, plasticizer and water
Image durability:	5 / 12 years under 24° C under recommended storage conditions prescribed by mills
Typical Application(s):	<b>POS, Fax / Medical</b>
Heat / Light / Humidity resistance	
Smoothness / Brightness / Tensile strength & Opacity to the maximum.	
Base Weight:	Available from <b>48 gsm</b> to <b>130 gsm</b> +/- 5 gsm per sq. m.





**Inkjet Papers:**

Celebrate the moment in True colors  
Bring the joy of true colors in to reality through **XL PLUS** Inkjet Papers. Picture perfect: that is the one word to describe **XL PLUS** Inkjet Papers. **XL PLUS** Inkjet Papers are imported, quality papers that absorb the ink quickly and retain the reproduction ratio to picture perfect.

**Our Product range:**

- RC Glossy
- RC Satin
- RC Pearl
- RC Silky – all the RC Papers are waterproof, instant dry and long lasting images
- Glossy Polycotton Canvas
- Matt Polyester Canvas
- Matt 100% Cotton Canvas
- Medical Printing film- white
- Medical Printing film- Blue : 250 gsm
- Transparent film : 170 gsm

**XL PLUS Inkjet Paper Specifications:**

**Rolls:**

Thickness: 190/ 200/ 240/  
250/ 260/ 285 gsm  
Inner core diameter: 2" & 3"  
Total Length: 30 meters long  
Width: 6"/ 12"/ 14"/ 17"/ 20"/  
24"/ 36" & 40"

**Sheets:**

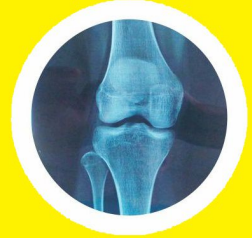
Thickness: 190/ 200/ 240/  
250/ 260/ 285 gsm  
MAXI (4R)  
A4 Size: 210X297mm  
A3 Size: 420X297 mm  
A3+ Size: 13"X19"

\*Customize sizes are available on request.

Suits all Inkjet Printers



Medical Films



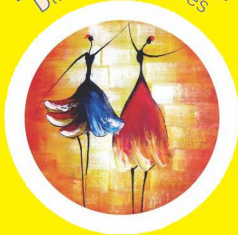
Glossy finish



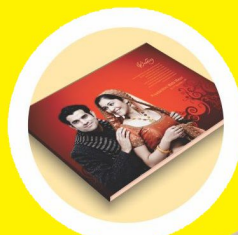
**Advantages:**

- ▶ Compatible in all types of Inkjet printers
- ▶ Long lasting images
- ▶ Different gsm. to match your need
- ▶ Different textures to suite the mood
- ▶ Different types for different purposes

Different Shades of Life  
Different Textures



Passport & Different  
Country Visa



**XL PLUS** High Glossy Inkjet Papers





**Sublimation Papers:**

**XL-PLUS** Sublimation Papers:

For high speed, bright & permanent result! **XL-PLUS** Sublimation Papers come as both Non-sticky & Sticky papers to be used according to your application. Whether it is on hard surfaces like wood, glass, Mug, Tiles or on a soft Textile fabric, leather etc., **XL-PLUS** Sublimation papers render the excellent result. High ratio ink transferring results in rich color rendition and true tone on the substrata. Our papers are also of quick drying time and avoids 'ghost' imaging that happens in poor quality paper, during the transfer from sublimation paper to substrata.



**SUPERDRY** Sublimation Papers:

Latest generation instant dry sublimation papers, designed for the industrial High speed printers from Reggiani, MS-Italy, Durst or Mimaki. For aqueous sublimation inks with an increased content of high boiling substances (i.e. Ricoh and Kyocera print heads), high colour transfer, instant dry, reduced wet cockling, excellent flatness.



3781 – Sublicolor SuperDry

Paper 50 gsm matt

3791 – Sublicolor SuperDry

Paper 95 gsm matt

Material	Superdry 50	Superdry 95
Open structured textiles 100 gsm	😊😊	😊
Open structured textiles 100–175 gsm	😊😊😊	😊😊
Open structured textiles > 175 gsm	😊😊	😊😊😊😊
Closed textiles	😞	😞
Elastic textiles	😊	😊
Hard substrates	😞	😞

**UNIVERSAL** sublimation papers

Specially coated sublimation papers for digital sublimation transfer. An all-rounder with excellent Drying times and extremely high colour transfer rates – Easy to handle, excellent performance. Suitable for interior design, advertising aids, soft signage etc. For printing with aqueous sublimation inks, high colour transfer, quick dry, sharp contour definition, Reduced wet cockling, excellent flatness.

3782 - Sublicolor Universal Paper  
70 gsm matt

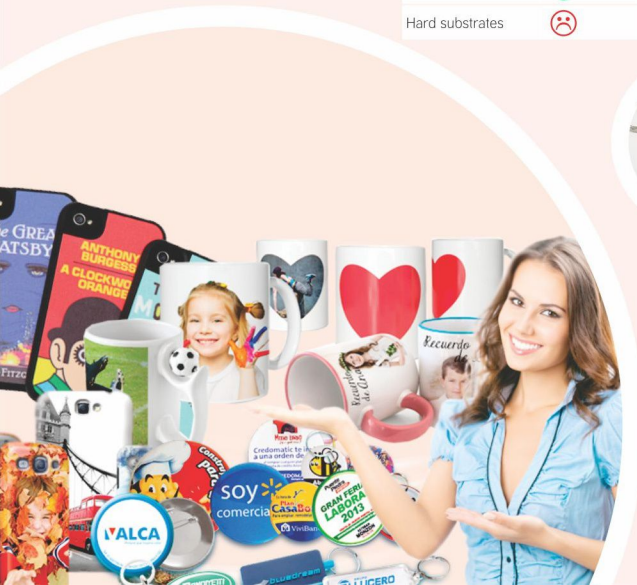
3792 - Sublicolor Universal Paper  
90 gsm matt

Material	Universal 70	Universal 90
Open structured textiles 100 gsm	😊😊	😊
Open structured textiles 100–175 gsm	😊😊😊	😊😊
Open structured textiles > 175 gsm	😊😊	😊😊😊😊
Closed textiles	😞	😞
Elastic textiles	😊	😊
Hard substrates	😞	😞



**Advantages:**

- ▶ Instant drying so, no smudging of ink while releasing
- ▶ Best color result of over 95%
- ▶ Works well with all inkjet high speed printers
- ▶ Broad range of width & length options
- ▶ Can transfer to any substrata like ceramic, metal, fabric etc.
- ▶ Available as A4 sheets & rolls in 100 gsm (std) and 112 gsm (extra premium)





### Vijayakumar Nidamanur

With over 35 years of expertise Mr. Vijayakumar has gained vast experience in these speciality papers. He deals with quality and trusted products only and he visited Germany, USA, Japan, UAE, China etc., for business purposes. He also visits National & International trade exhibitions to upgrade the products.

### Vision

To work towards its presence in global markets and become a benchmark company in marketing speciality paper products and provide quality, eco-friendly paper & printing solutions

### Mission

Marching towards 2020...

Creating innovative ideas to offer quality and environment friendly products to its customers. Constantly increase the product line & production capacity with fully automated conversion plant to meet the market demands.

### Quality Policy

Our quality is achieved through a rigorous process of developing the workforce and enhancing them to become a professional team in handling the customer, materials and equipments.

Maintain relationships with employees and suppliers so as to improve productivity and decrease the product cost. Strive to meet our customer expectation and provide value during every interaction.

### SOURCE



WE GO GREEN  
RECYCLE  
REUSE  
REDUCE



FOR OUR FUTURE  
TO SAVE EARTH





📍 Plot No.: 68, V.S.Mani Nagar  
(Behind Pearl Stone, 100 ft. Rd.)  
Madhavaram, Chennai-600 060  
Tamilnadu, INDIA

📞 +91 98400 34705  
+91 44 2644 5363  
+91 76048 40040

✉ [excelmarktrading@gmail.com](mailto:excelmarktrading@gmail.com)

🌐 [excelmark.co.in](http://excelmark.co.in)

